

ConfigTool

User's Manual

V3.1.0

Important Safeguards and Warnings

Please read the following safeguards and warnings carefully before using the product in order to avoid damages and losses.

Note:

- Do not expose the device to lampblack, steam or dust. Otherwise it may cause fire or electric shock.
- Do not install the device at position exposed to sunlight or in high temperature. Temperature rise in device may cause fire.
- Do not expose the device to humid environment. Otherwise it may cause fire.
- The device must be installed on solid and flat surface in order to guarantee safety under load and earthquake. Otherwise, it may cause device to fall off or turnover.
- Do not place the device on carpet or quilt.
- Do not block air vent of the device or ventilation around the device. Otherwise, temperature in device will rise and may cause fire.
- Do not place any object on the device.
- Do not disassemble the device without professional instruction.

Warning:

- Please use battery properly to avoid fire, explosion and other dangers.
- Please replace used battery with battery of the same type.
- Do not use power line other than the one specified. Please use it properly. Otherwise, it may cause fire or electric shock.

Special Announcement

- This manual is for reference only.
- All the designs and software here are subject to change without prior written notice.
- All trademarks and registered trademarks are the properties of their respective owners.
- If there is any uncertainty or controversy, please refer to the final explanation of us.
- Please visit our website for more information.

Table of Contents

1	Product Overview.....	- 1 -
2	Installation.....	- 2 -
3	Login.....	- 4 -
4	General Operation.....	- 6 -
4.1	Login Config Interface.....	- 6 -
4.1.1	Auto Login Config Interface	- 6 -
4.1.2	Manually Login Interface	- 6 -
4.2	Config Device Parameter	- 8 -
4.2.1	Set Video Effect.....	- 8 -
4.2.2	Set Network Parameter	- 13 -
4.2.3	Encoding Parameter.....	- 14 -
4.2.4	Upgrade	- 16 -
4.2.5	System Info	- 17 -
4.3	Batch Mode	- 18 -
4.3.1	Batch Config Parameter	- 19 -
4.3.2	Batch Modify IP	- 20 -
4.3.3	Batch Upgrade	- 21 -
4.4	View Log Info	- 22 -

1 Product Overview

ConfigTool is a system tool with the following functions:

Real time monitoring preview of IPC and other devices, and support setting of video effects.

Set network, encoding parameter of IPC and other devices.

View device SN, version and model.

Upgrade device program.

View device log info.

Batch config device parameters.

2 Installation

You can refer to these steps to install ConfigTool.


Step 1. Double click . System pops up installation interface as in Figure 2- 1.



Figure 2- 1

Step 2. Click Next. System shows Please select a install directory box as in Figure 2- 2.

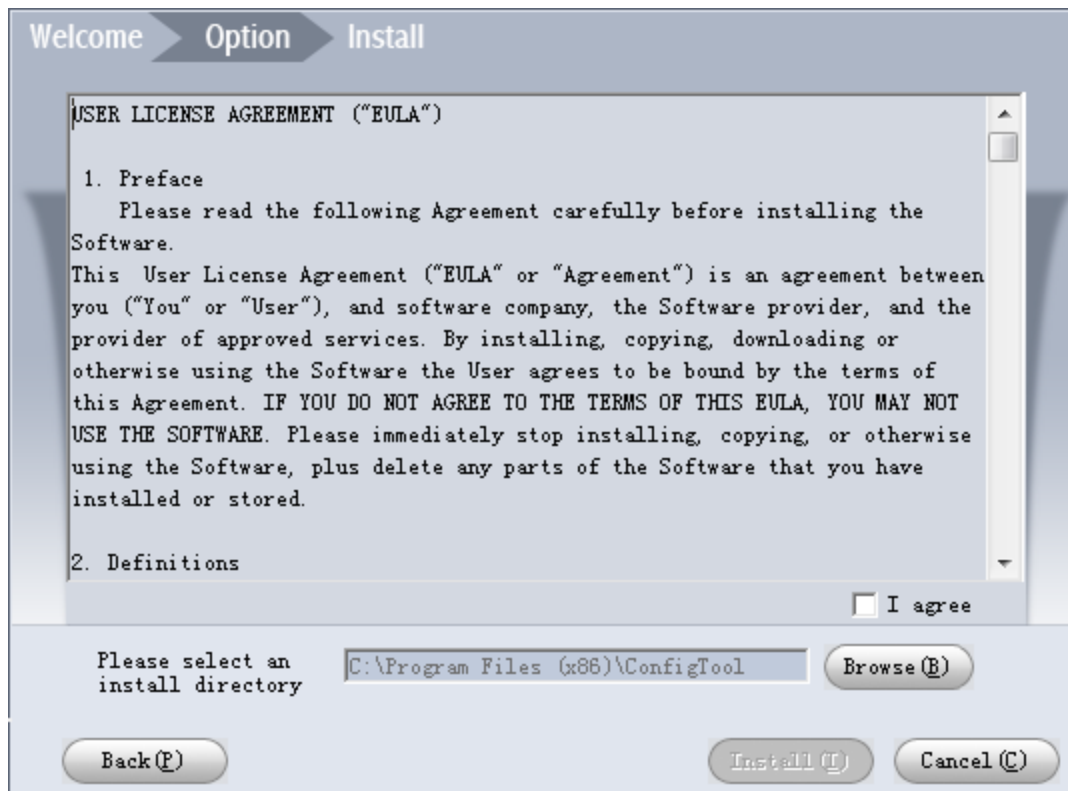


Figure 2- 2

Step 3. Check I agree box, and click Browse to choose a directoty.

Step 4. Click Install. Install ConfigTool, and after it finishes, the system shows Figure 2- 3.

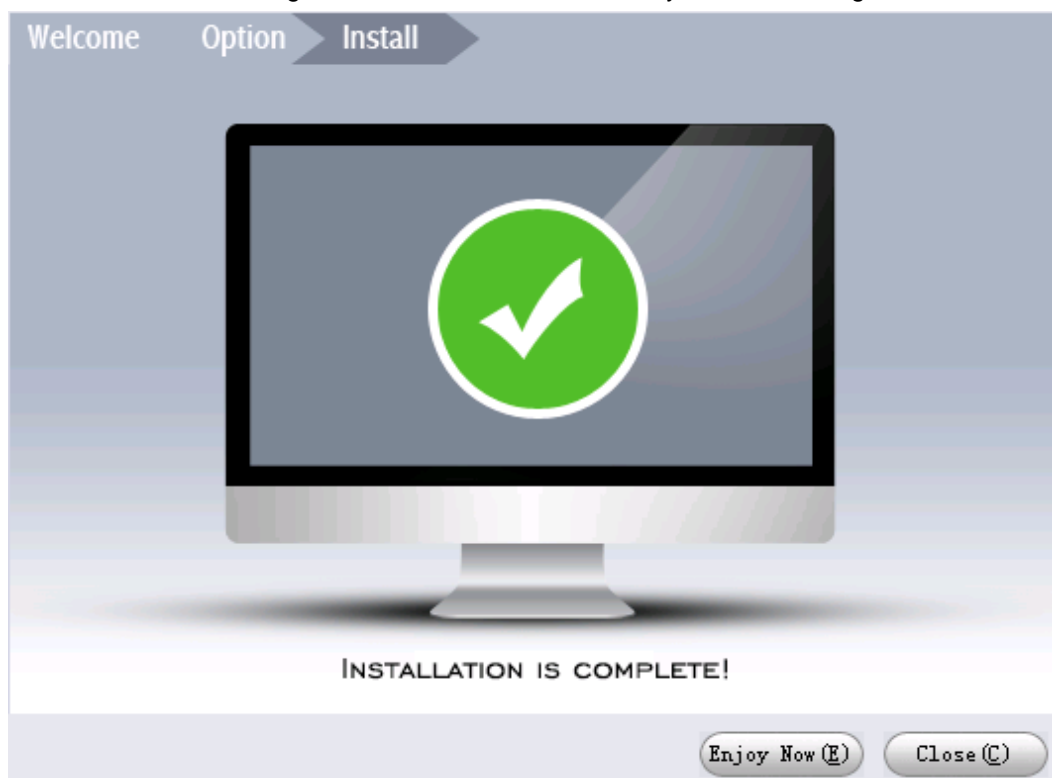



Figure 2- 3

Step 5. Click Close.

3 Login






After installation completes, double click , system pops up the software interface as in Figure 3- 1.

ConfigTool											
Find number of devices: 33			IPv4	All			Refresh	Login	Setting	Batch Mode	
No.	Type	Model	IP	TCP Port	HTTP Port	Subnet Mask	Gateway	MAC	SN	Version	Operate
1	PC-XXX05	PC-XXX05	10.34.3.238	37777	80	255.255.255.0	10.1.1.1	C-30-5B-B4-A9-...			⚙️ 🔑
2	PC-NVR	PC-NVR	0.0.0.0	37777	80	0.0.0.0	0.0.0.0	00:10:18:cc:80:5d			⚙️ 🔑
3	NVD	NVD	171.35.0.157	37777	80	255.255.0.0	171.35.0.1	90:02:a9:c7:74:...	1B000EDPA...	3.200.000...	⚙️ 🔑
4	HCVR	DHI-HCVR720...	171.35.0.132	37777	80	255.255.0.0	171.35.0.1	4c:11:bf:12:ca:d2	1A02679PAE...	3.200.001...	⚙️ 🔑
5	HDVR	HDVR	171.35.0.133	37777	80	255.255.0.0	171.35.0.1	20:98:14:16:56:12	1D019A4PA...	3.210.0.0	⚙️ 🔑
6	HDVR	DVR	171.35.0.134	37777	80	255.255.255.0	171.35.0.1	4c:11:bf:14:53:fc	PZA4ML489...	3.200.001...	⚙️ 🔑
7	SD	DH-SD22204T...	171.35.0.147	37777	80	255.255.0.0	171.35.0.1	4c:11:bf:1c:05:99	1D0109CYAK...	2.400.0.1	⚙️ 🔑
8	IPC	IPC-HF8239E	171.35.0.148	37777	80	255.255.0.0	171.35.0.1	90:02:a9:42:ad:...	1C005D4YAZ...	2.420.0.1	⚙️ 🔑
9	HDVR	HDVR	171.35.0.154	37777	80	255.255.0.0	171.35.0.1	90:02:a9:b9:d3:...	YZA4EZ037...	3.200.001.9	⚙️ 🔑
10	IPC	IP Camera	171.35.0.155	37777	80	255.255.0.0	171.35.0.1	90:02:a9:06:25:...	PZC2BS0150...	2.212.0.0	⚙️ 🔑
11	HDVR	HDVR	171.35.0.180	37777	80	255.255.0.0	171.35.0.1	00:00:23:3f:4f:f6	YGH3DQ006...	3.200.001...	⚙️ 🔑
12	IPC	IP Camera	171.35.0.219	37777	80	255.255.0.0	171.35.0.1	90:02:a9:52:7e:...	PZC4FW205...	2.420.1.0	⚙️ 🔑
13	IPC	IP Camera	171.35.0.101	37777	80	255.255.0.0	171.35.0.1	90:02:a9:13:cf:e8	YZC3CW183...	2.211.0.1	⚙️ 🔑
14	IPC	IPC-HDW2100	171.35.0.103	37777	80	255.255.0.0	171.35.0.1	90:02:a9:34:70:8f	PZC3MX078...	2.103.0.6	⚙️ 🔑
15	IPC	IP Camera	171.35.0.108	37777	80	255.255.0.0	171.35.0.1	90:02:a9:08:d2:f9	PC3HU1840...	2.212.0.0	⚙️ 🔑
16	SD	IP PTZ Dome	171.35.0.229	37777	80	255.255.0.0	171.35.0.1	90:02:a9:14:cd:...	84	2.213.0.0	⚙️ 🔑
17	HCVR	HCVR	171.35.0.240	37777	80	255.255.0.0	171.35.0.1	90:02:a9:da:64:...	1D0390CFAZ...	3.200.001...	⚙️ 🔑
18	IPC	IP Camera	171.35.0.153	37777	80	255.255.0.0	171.35.0.1	90:02:a9:3d:5a:...	PZC4CW355...	2.420.0.0	⚙️ 🔑
19	IPC	IP Camera	171.35.0.183	37777	1111	255.255.0.0	171.35.0.1	90:02:a9:51:cf:7b	PZC4DW462...	2.400.0.1	⚙️ 🔑
20	SD	IP PTZ Dome	171.35.0.202	37777	80	255.255.0.0	171.35.0.1	90:02:a9:78:7e:...	PZB2EN4990...	2.213.0.0	⚙️ 🔑

Figure 3- 1

Parameter	Note
Device List	Includes device type, model, IP, port, gateway, MAC address, SN, version, config and WEB login shortcut key.
Refresh	Refresh devices in current segment.
Login	Login device config interface by inputting IP address, username, password and port.


Parameter	Note
Setting	<ul style="list-style-type: none"> ● Multicast: check, search device in the same segment with current PC. ● Search by IP: Check, search device by initial IP and IP quantity. ● Default Username: Default username is admin, and you can set new username. ● Default Password: Default password is admin, and you can set new password.
Batch Mode	<ul style="list-style-type: none"> ● Enter batch setup interface, you can batch set device, modify IP and upgrade.
	Input device type or IP address, search currently matched devices.
	Login config interface. You can double click device in list to login.
	Login WEB interface of the device.

4 General Operation

4.1 Login Config Interface

By logging in IP Installation config interface, you can quickly view and modify device info without logging in device's WEB interface.

4.1.1 Auto Login Config Interface

If your device and the PC where ConfigTool is installed are in the same segment, then ConfigTool will automatically search devices and display devices it finds in device list. Double click IP address of the device or click , system pops up login progress bar as in Figure 4- 1.

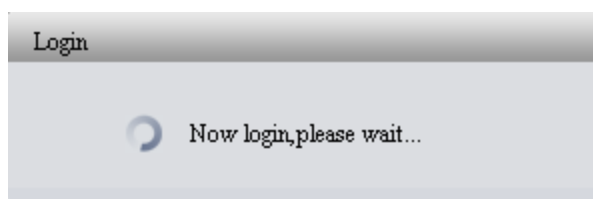


Figure 4- 1

- Login the system with default username and password: admin/admin.
- If login failed, please click Login in the upper-left, and input the correct username and password.

4.1.2 Manually Login Interface

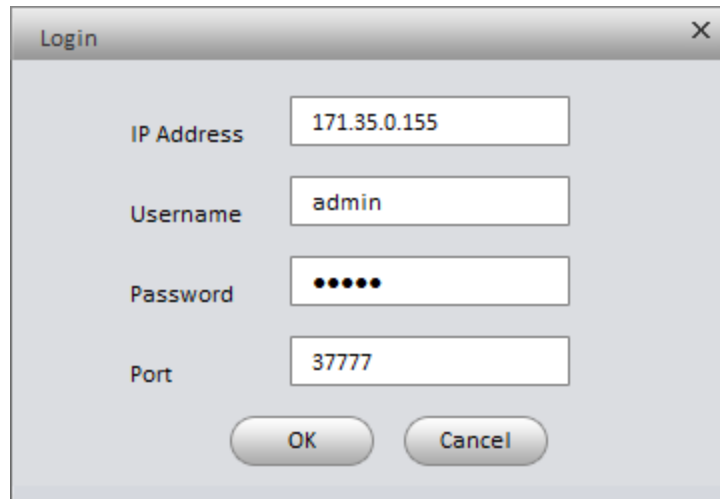
If the device is not displayed in device list of ConfigTool, then you can manually input its IP, port, username and password to login config interface.

Note:

Before you manually login config interface, you shall make sure the device can communicate with PC where ConfigTool is installed.

Detailed steps are as follows:

Step 1. Click Login on the upper-left. System pops up a login box as in Figure 4- 2.

A screenshot of a 'Login' dialog box. It has a title bar with 'Login' and a close button (X). Inside, there are four input fields: 'IP Address' with the value '171.35.0.155', 'Username' with the value 'admin', 'Password' with five dots, and 'Port' with the value '37777'. At the bottom are 'OK' and 'Cancel' buttons.

Field	Value
IP Address	171.35.0.155
Username	admin
Password	•••••
Port	37777

Figure 4- 2

Parameter	Note
IP	Device IP address.
Username	Username to login device. This user must be added in device setup.
Password	Password of the username you enter to login. This password must be added in device setup.
Port	Device port no.

Step 2. Input IP, username, password and port.

Step 3. Click OK. After login, system shows interface as in Figure 4- 3.

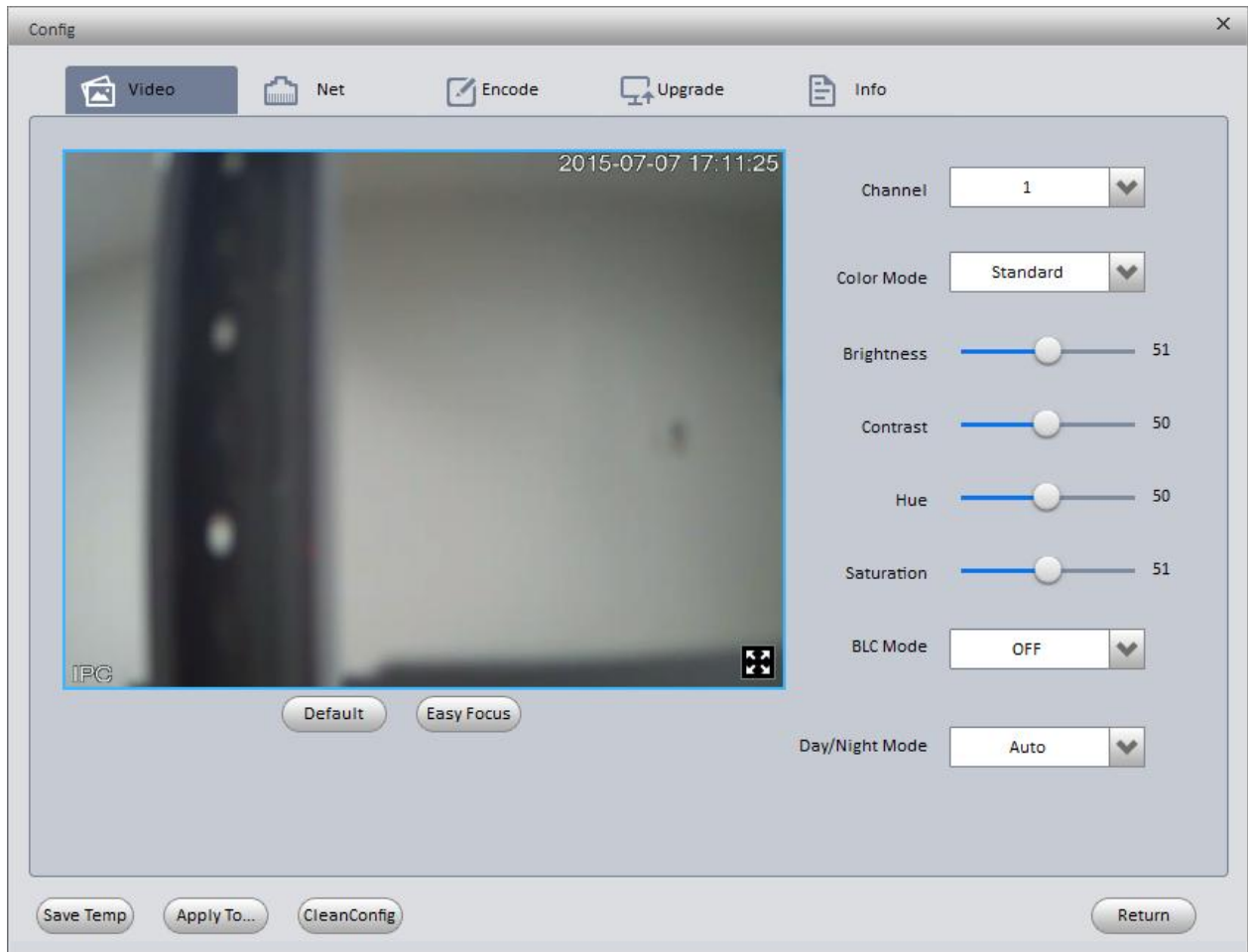


Figure 4- 3

Note:

Besides upgrading via device background port 3800, all other ports must match port in system config> network> TCP port, otherwise, it cannot login.

4.2 Config Device Parameter

4.2.1 Set Video Effect

ConfigTool supports viewing device real time monitoring and setting video effect.

Detailed steps are as follow:

- Step 1. Login device config interface. Please refer to Ch 4.1
- Step 2. Click Video tab, system shows interface as in Figure 4- 4.

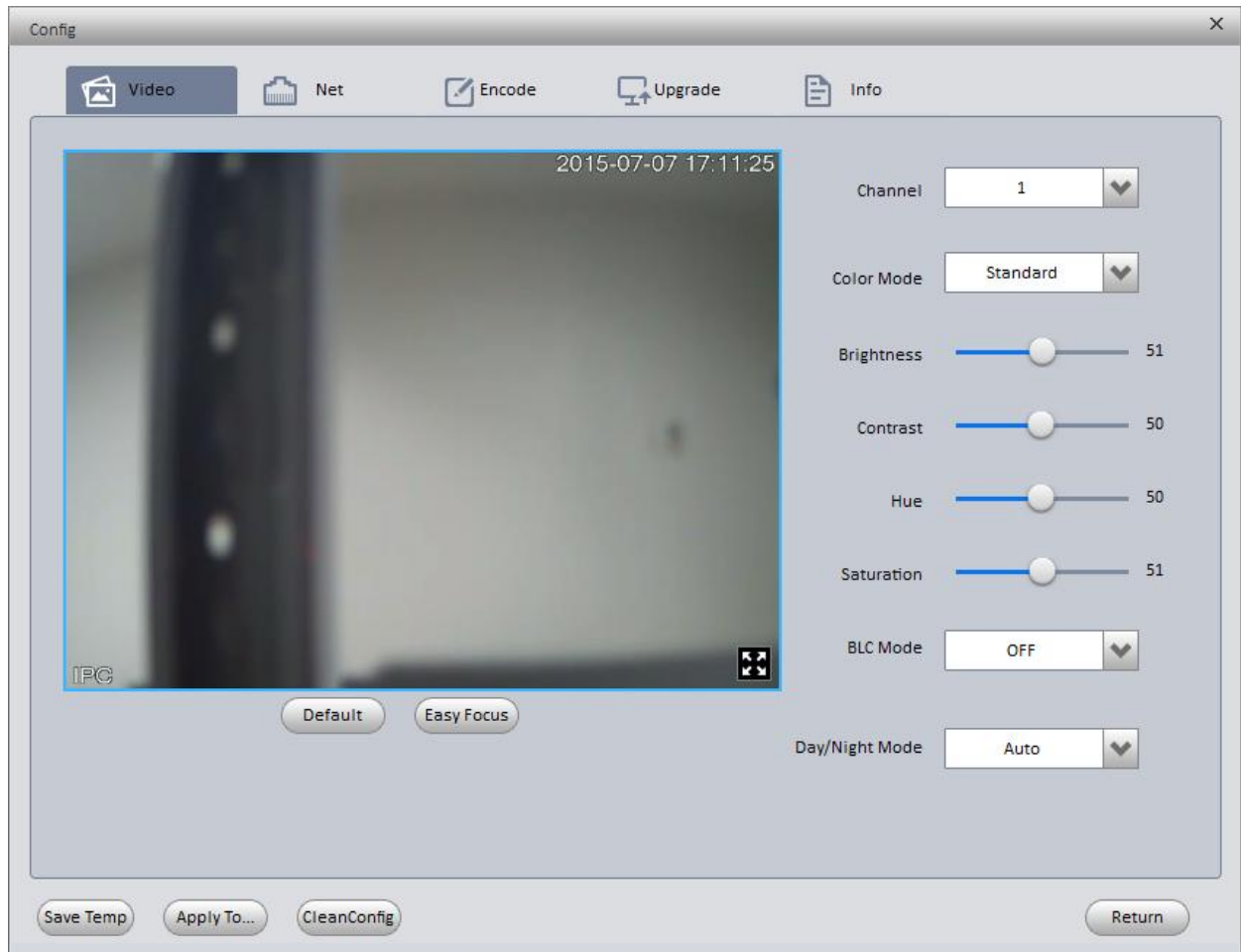


Figure 4- 4

Parameter	Note
	<ul style="list-style-type: none"> In normal window display, click , you can go to full screen display. When video is in full screen, click to return to default window.
Channel	Select channel to monitor
Color Mode	There are three modes: standard, soft and bright.
Brightness	<p>It adjusts brightness of image.</p> <p>When you find image is too dark to too bright, you can adjust this value. The value ranges from 0 to 100, and 40 to 60 is recommended. Default is 50.</p>
Contrast	<p>It adjusts contrast of image.</p> <p>When image brightness is ok, but contrast is insufficient, you can adjust this value. The value ranges from 0 to 100, and 40 to 60 is recommended. Default is 50.</p>
Hue	It adjusts hue of image.

Parameter	Note
Saturation	It adjusts saturation of image.
BLC Mode	<ul style="list-style-type: none"> ● Off: Close BLC mode. ● BLC: Increase brightness of main body in dark image. ● WDR: When light comparison of image is strong, it adjusts strong and weak lights in image, increasing dynamic range of imaging model. ● HLC: Reduce string light, and balance light.
Day/Night Mode	Set video into color, black/white, or auto mode.
Easy Focus	Assist to adjust focus.
Default	It restores default value of brightness, contrast, hue and saturation.
Save Temp	Save current config as template to local. You can select video color, BLC mode, code and sync pc to save.
Apply To	Apply current config to all devices as batch
Clear Config	Clear config of current device. System will pop up box to inform you whether the clearing is successful or failed.
Return	Click it to return to ConfigTool's main interface.
Zoom In	Zoom in image with your mouse wheel.
Original Image	After image is zoomed in, right click mouse to go to original image display.

Step 3. View preview and set channel and color parameters.

Step 4. Set Easy Focus.

- 1) Click Easy Focus. See Figure 4- 5.

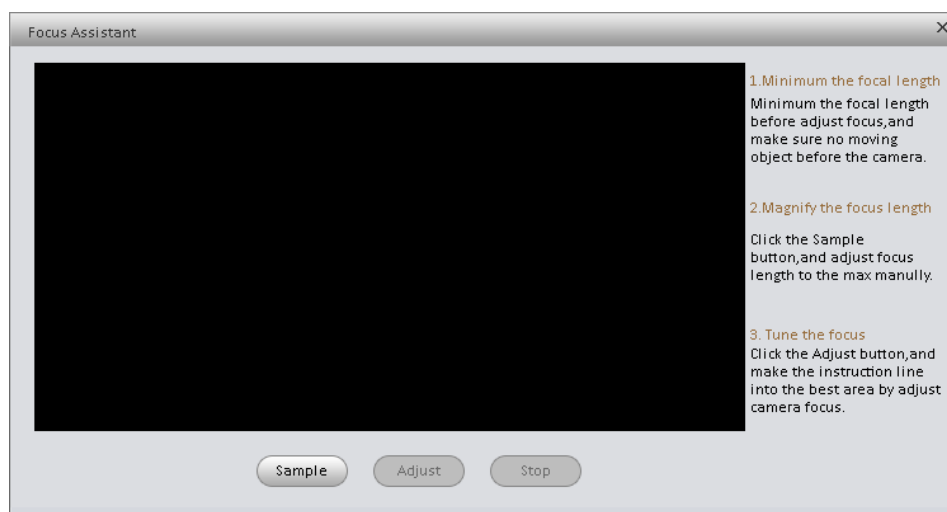


Figure 4- 5

- 2) Follow guide on the right and start to sample, see Figure 4- 6.

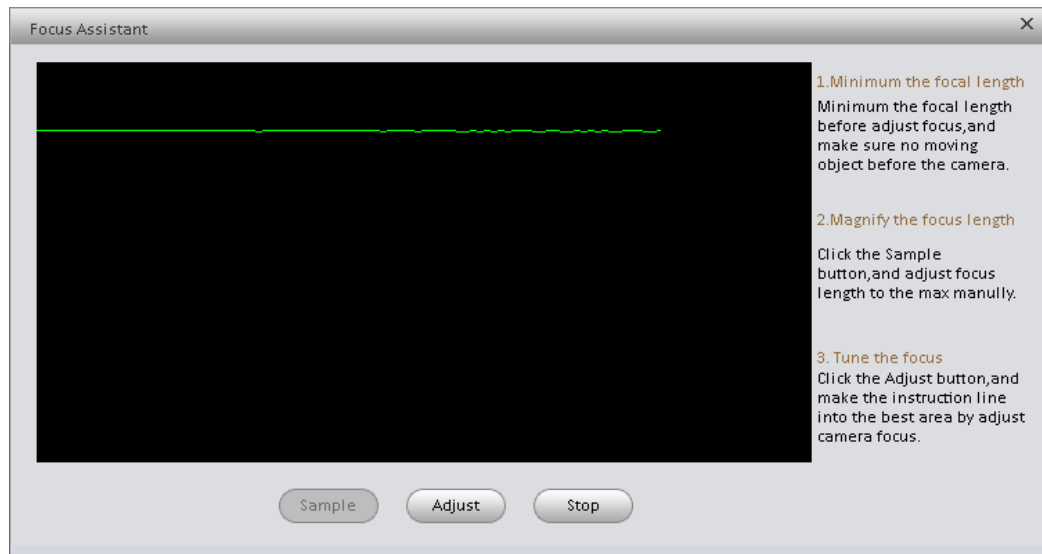


Figure 4- 6

Adjust until image is clear as in Figure 4- 7.

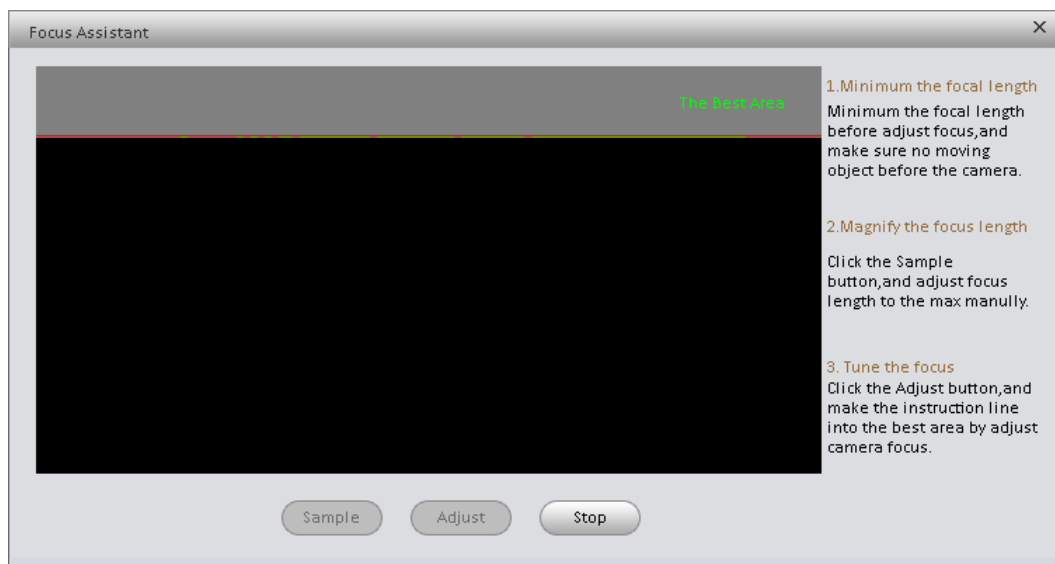


Figure 4- 7

Note:

Red line is the definition value of current image. Green line the definition value when focus changes from min to max.

Step 5. Save as template

- 1) Click Save Temp. See Figure 4- 8.

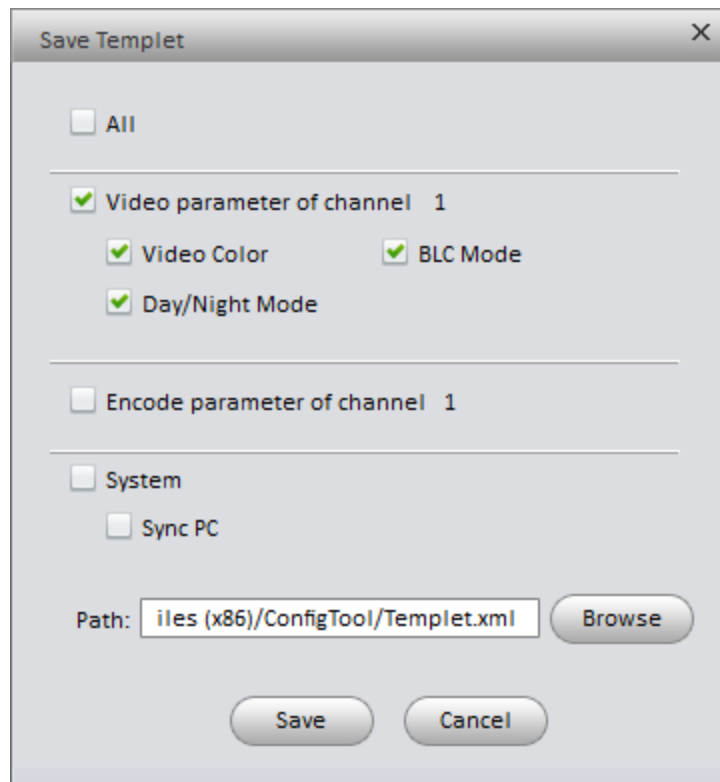


Figure 4- 8

- 2) Check designated item, select template path.
- 3) Click save.

Step 6. Apply to all devices.

- 1) Click Apply To. See

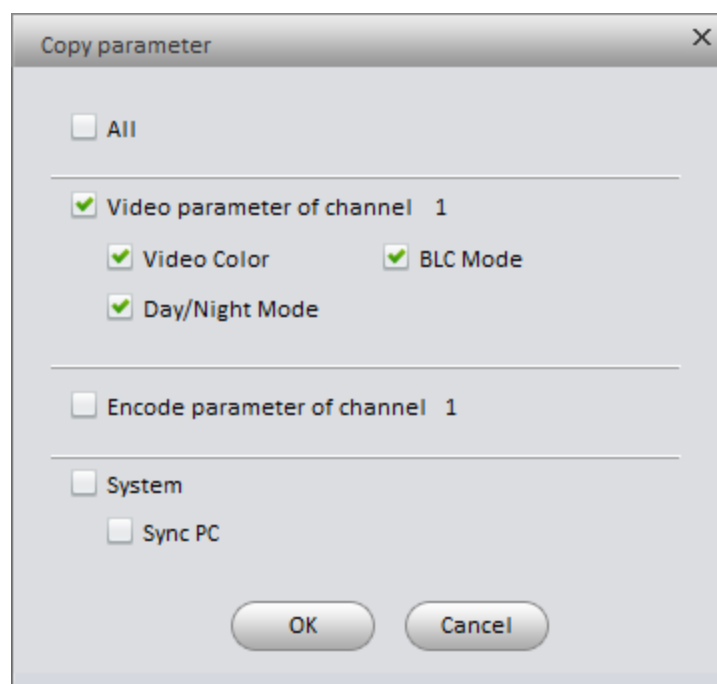


Figure 4- 9

- 2) Check designated item.
- 3) Click OK, system goes to Batch Mode interface.
- 4) Select device and click Start.

4.2.2 Set Network Parameter

ConfigTool supports setting of device IP type, IP address, port and etc.

Detailed steps are as follows:

Step 1. Click Net tab in Config interface. System shows interface as in Figure 4- 10.

Figure 4- 10

Parameter	Note
Ethernet Card	Select device Ethernet card.
DHCP	Set whether to enable DHCP or not. (Currently only support IPV4)
IP Version	Device IP version, you can select IPv4 and IPv6.
IP Address	Device IP address. When you check DHCP, you cannot set IP address.
Subnet Mask	Set device subnet mask. Only when IP Version is IPv4, you need to set subnet mask. When you check DHCP, you cannot set subnet mask.

Parameter	Note
Link Address	Each host in LAN allocated with an exclusive link address for LAN access. This address cannot be modified. Only when IP version is IPv6, you need to set link address.
Gateway	Set device gateway. When you check DHCP, you cannot set gateway.
Mac	Device Mac address, you cannot set it.
TCP	Device TCP port, default port is 37777. You can set it according to actual condition. Note: After you modify port no. and save it, you need to reboot. Port no. cannot overlay each other.
HTTP	Device HTTP port, except port 80, port no. from 1 to 1024 are not recommended. Note: After you modify port no. and save it, you need to reboot. Port no. cannot overlay each other.
UDP	Device UDP port, default port is 37778. You can set it according to actual condition.
RTSP	Device RTSP port, default port is 554. You can set it according to actual condition.
Save	Save parameter to the device.
Return	Return to ConfigTool main interface.

Note:

ConfigTool provides only network card parameter of current connection. After network parameter config is complete, a box will pops up saying config is successful and now device will reboot. Please do not login the device during rebooting, otherwise, parameter config may fail.

Step 2. Set corresponding parameter.

Step 3. Click Save Net to finish setup.

4.2.3 Encoding Parameter

ConfigTool supports setup of device main stream, encode mode, resolution and etc.

Detailed steps are as follows:

Step 1. Click Code tab in config interface. System shows interface as in Figure 4- 11.

The screenshot shows the 'Config' window with the 'Encode' tab selected. It contains two columns of settings for video encoding. The left column represents the 'Main Stream' and the right column represents the 'Sub Stream'. Both streams are currently enabled, as indicated by the checked 'Enable' checkboxes. The 'Main Stream' is configured with H.264 encoding, D1 resolution, 25 fps frame rate, VBR control, and a bit rate of 1024 kbps. The 'Sub Stream' is also configured with H.264 encoding, CIF resolution, 15 fps frame rate, VBR control, and a bit rate of 384 kbps. At the bottom of the window, there are five buttons: 'Save Temp', 'Apply To...', 'CleanConfig', 'Save', and 'Return'.

Figure 4- 11

Parameter	Note
Channel	Select corresponding channel no.
Main Stream	Device main stream type, including common, motion, alarm.
Encode Mode	Video compression format, including: MPEG4, MS-MPEG4, MPEG2, MPEG1, H.263, MJPG, FCC-MPEG4, H.264
Resolution	Resolution of current channel
Frame Rate	Frame rate of current channel PAL: 1 fps ~ 25 fps; NTSC: 1 fps ~ 30 fps.
Rate Control	Including CBR and VBR.
Bit Rate	Bit rate of current channel.
Enable	Check, enable sub stream.
Sub Stream	Set sub stream type.
Save	Save parameters to the device.
Return	Return to ConfigTool main interface

Step 2. Set corresponding parameter.

Step 3. Click Save Code to finish setup.

4.2.4 Upgrade

You can upgrade device via ConfigTool.

Detailed steps are as follows:

Step 1. Click Upgrade tab in config interface. System shows interface as in Figure 4- 12.

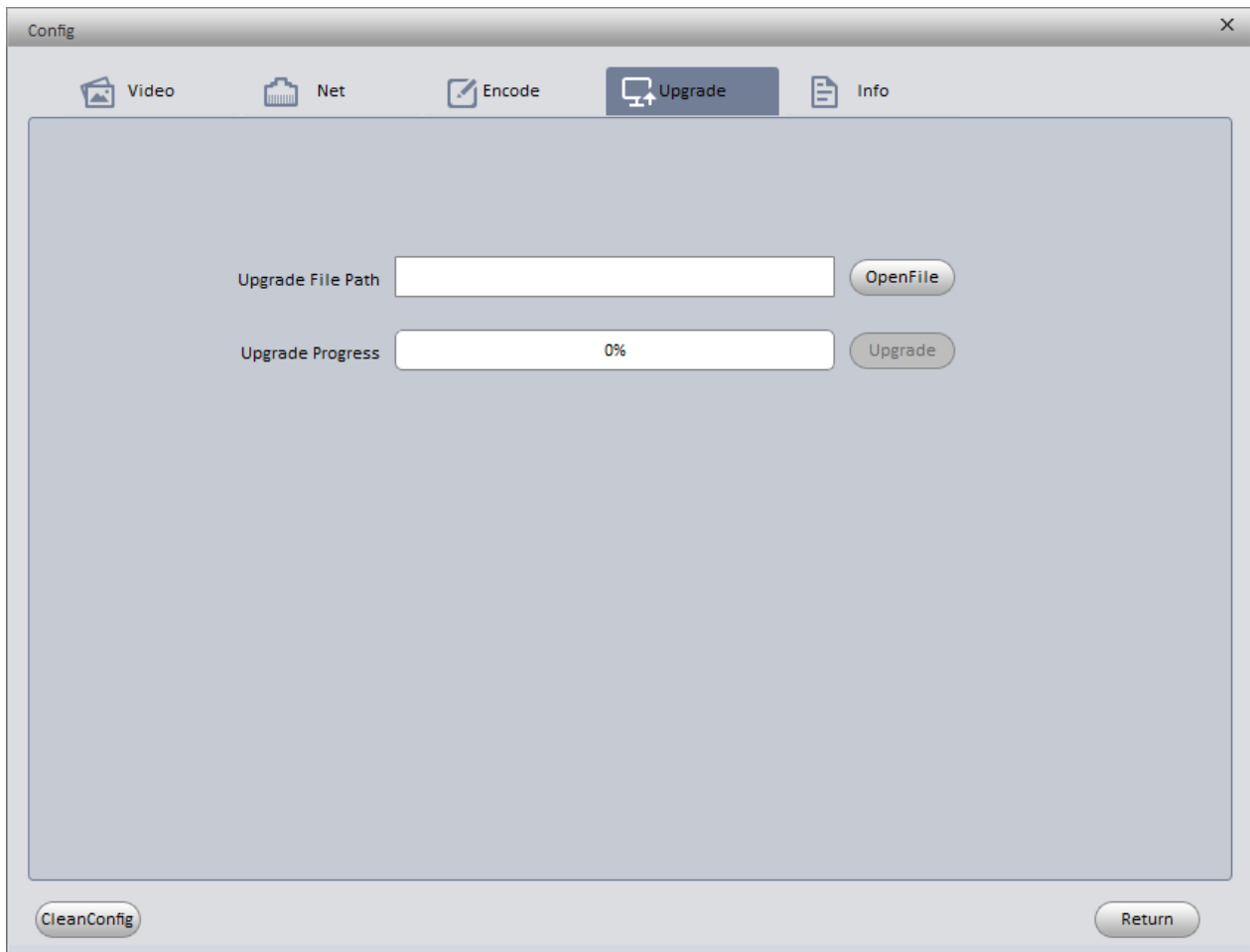


Figure 4- 12

Step 2. Click Open File. System pops up Open box.

Step 3. Select upgrade file and click Upgrade. System shows file transmission. When file transmission is done, system will automatically start to upgrade and show current progress as in Figure 4- 13.

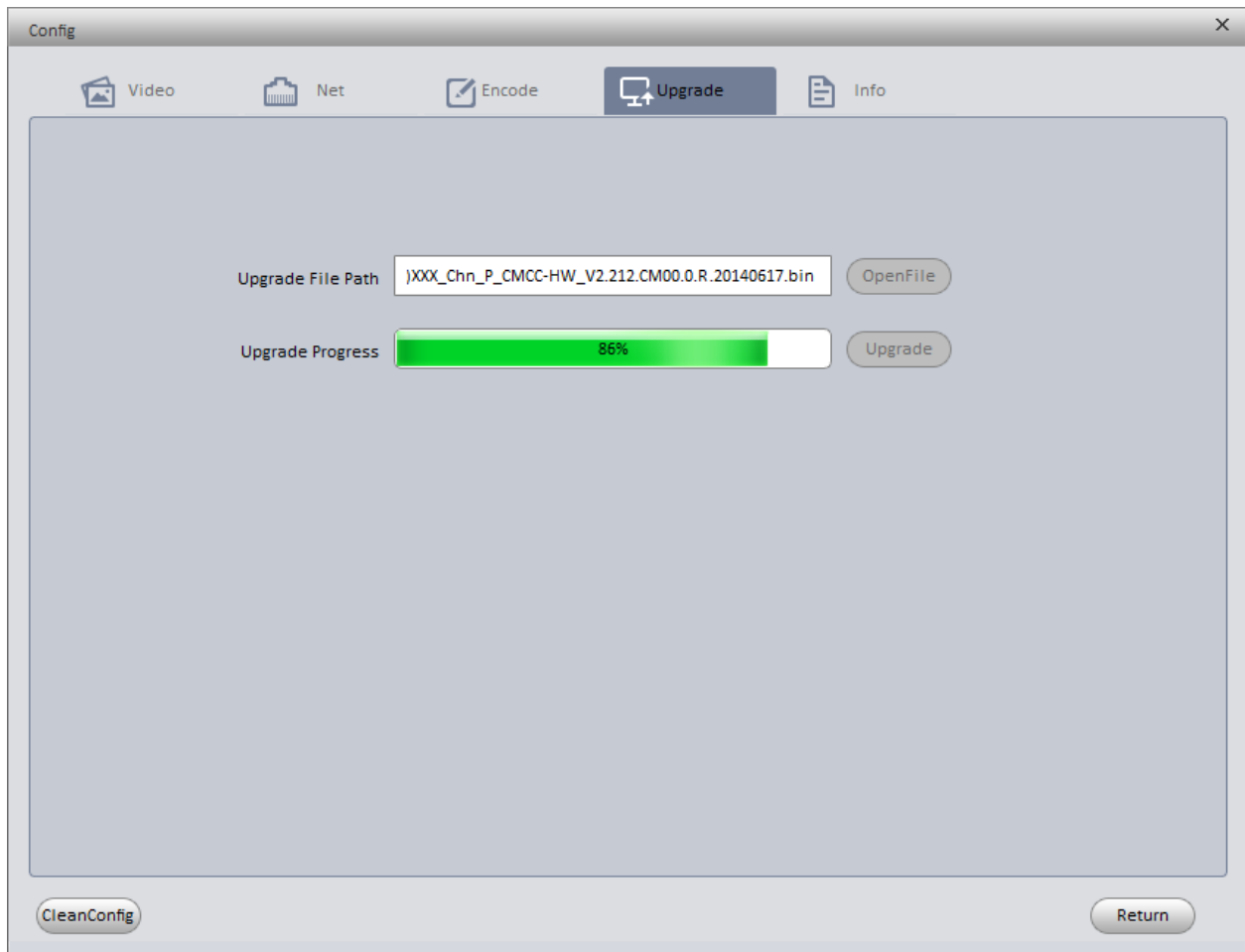


Figure 4- 13

When upgrade is complete, it will inform you that the device is going to reboot.

Step 4. Click Return to return to ConfigTool main interface.

4.2.5 System Info

Click SysInfo tab in config interface to view device version no. and model info as in Figure 4- 14.

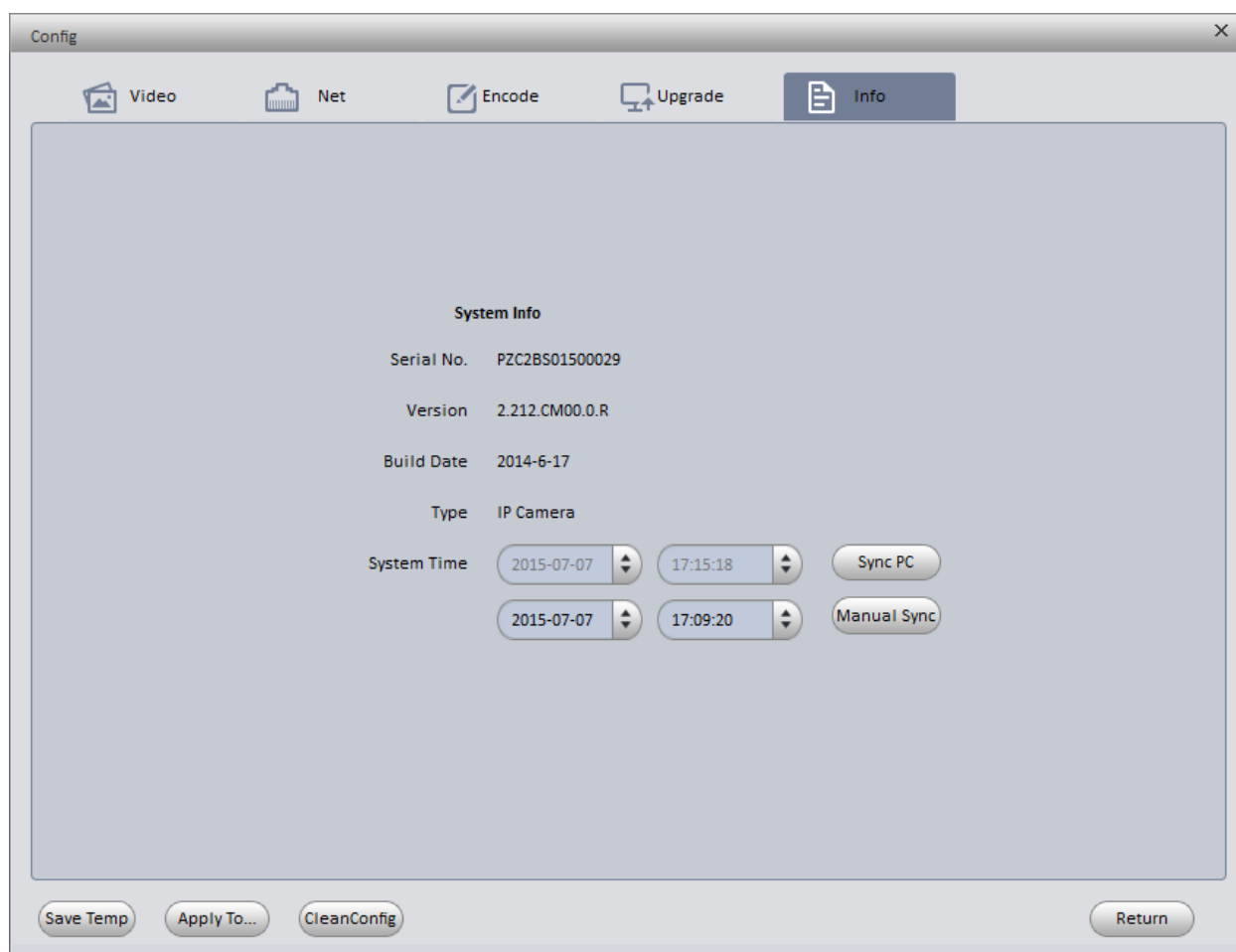


Figure 4- 14

Parameter	Note
Serial No.	Device serial no.
Version	Device current software version
Build Date	Device build date.
Type	Device mode type.
Sync PC	Sync PC time to device.
Manual Sync	Manually set system time, and sync time to device.
Return	Return to ConfigTool main interface

4.3 Batch Mode

ConfigTool supports device setup, modify IP and upgrade as batch.

In ConfigTool main interface, click batch mode, see Figure 4- 15.

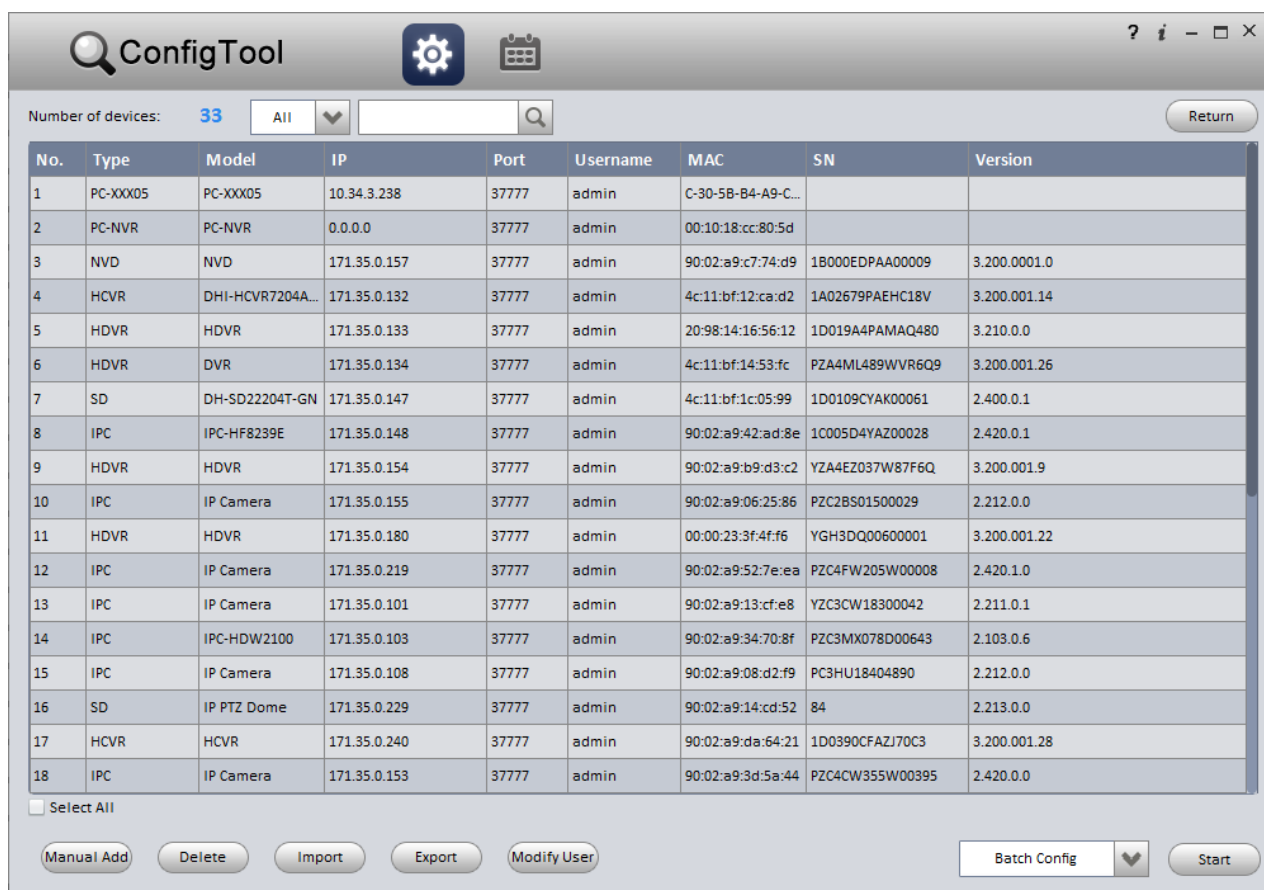


Figure 4- 15

Parameter	Note
Return	Quit batch mode, and return to main interface.
Manual Add	Manually add device, you may add a single IP or IP segment. Successfully added device will be shown in list.
Delete	Delete device.
Import Dev	Import device list into batch mode.
Export Dev	Export current device list to local.
Modify User	Modify device login user, password and port.

4.3.1 Batch Config Parameter

- Step 1. In Batch Mode, select one or more devices.
- Step 2. In dropdown list on the right, select Config.
- Step 3. Click Start. See Figure 4- 16.

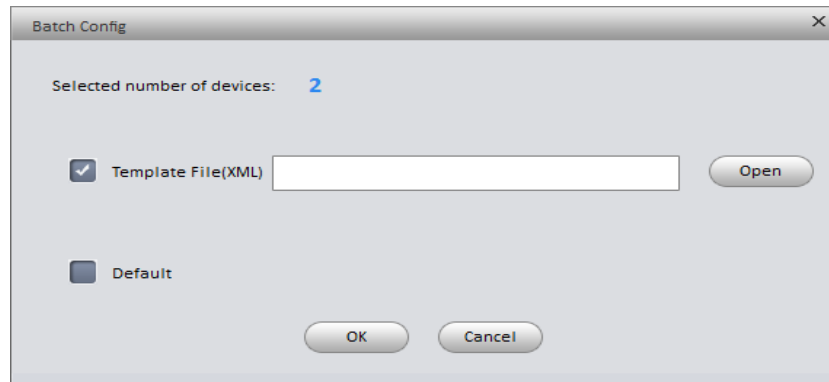


Figure 4- 16

Step 4. Click Open, select config file. You can check Default to reset device parameters.

Step 5. Click OK. System config will be as in Figure 4- 17.

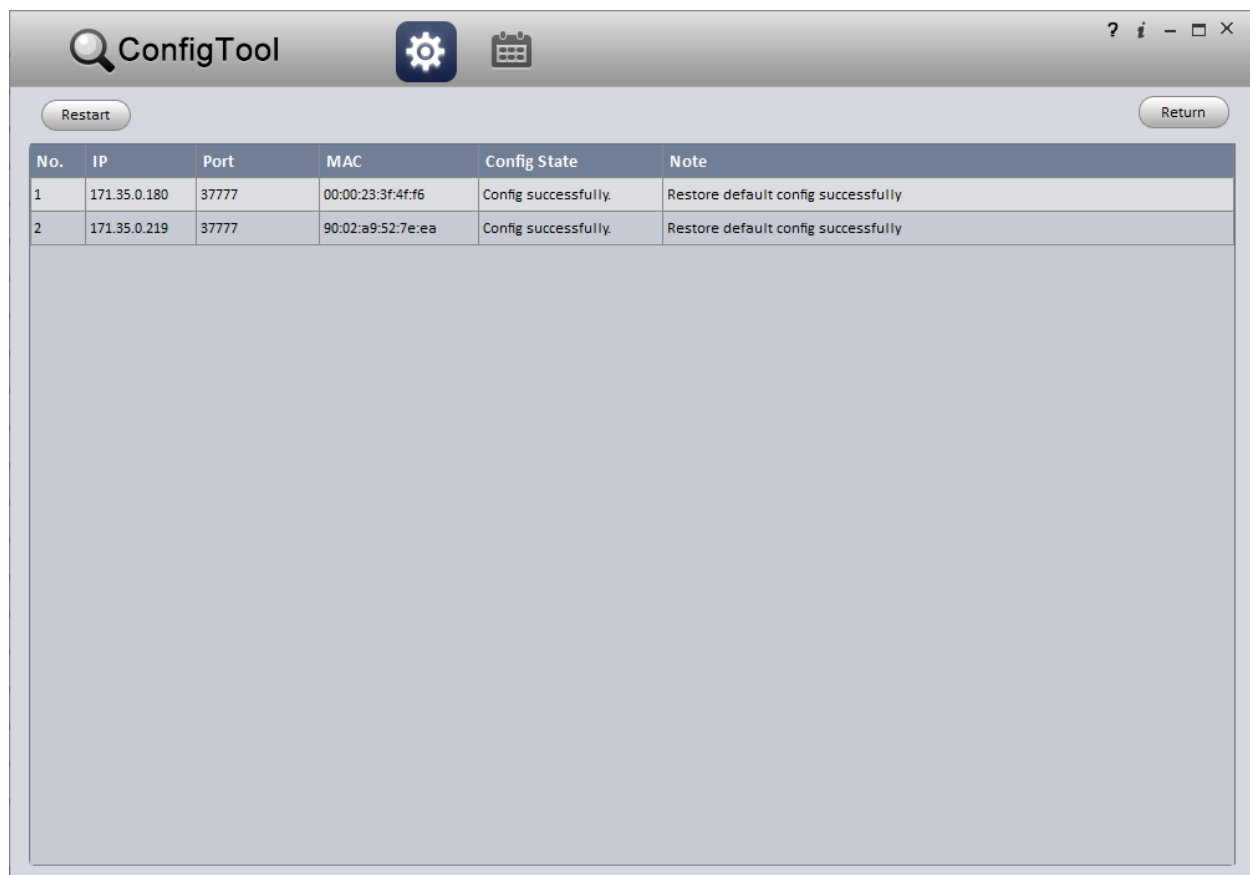


Figure 4- 17

4.3.2 Batch Modify IP

Step 1. In Batch Mode interface, select one or more devices.

Step 2. In dropdown list on the right, select Modify IP.

Step 3. Click Start. See Figure 4- 18.

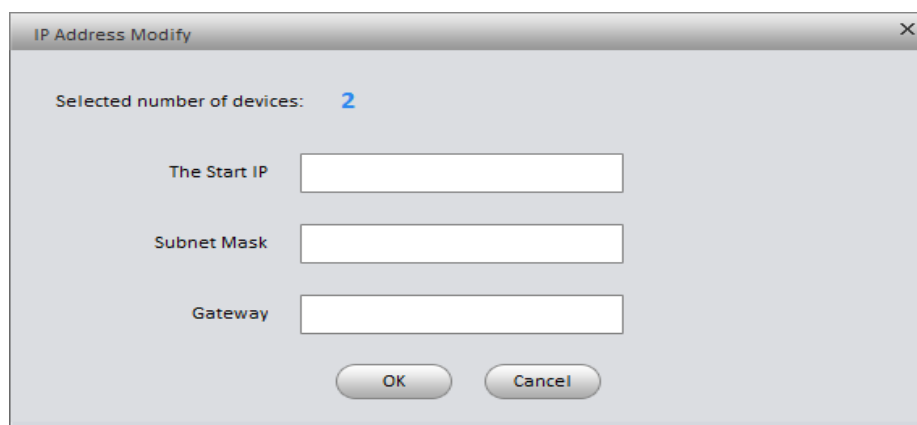


Figure 4- 18

Step 4. Set initial IP, subnet mask and gateway.

Step 5. Click OK.

4.3.3 Batch Upgrade

Step 1. In Batch Mode interface, select one or more devices.

Step 2. In dropdown list on the right, select Upgrade.

Step 3. Click Start. See Figure 4- 19.

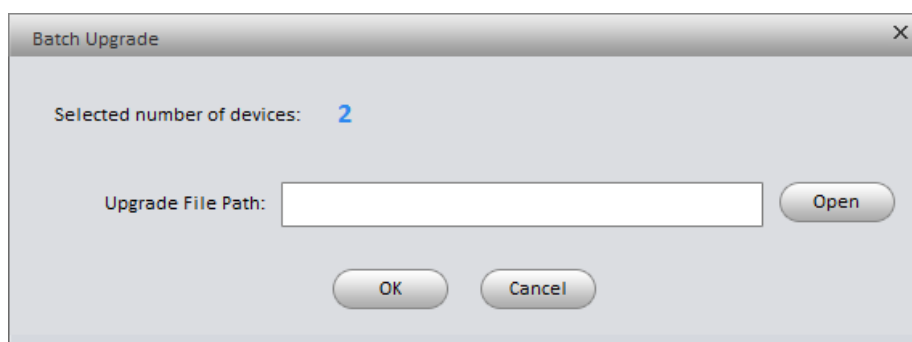



Figure 4- 19

Step 4. Click Open, select upgrade file.

Step 5. Click OK.

4.4 View Log Info

You can view log info in ConfigTool interface.

Step 1. In ConfigTool main interface, click . See Figure 4- 20.

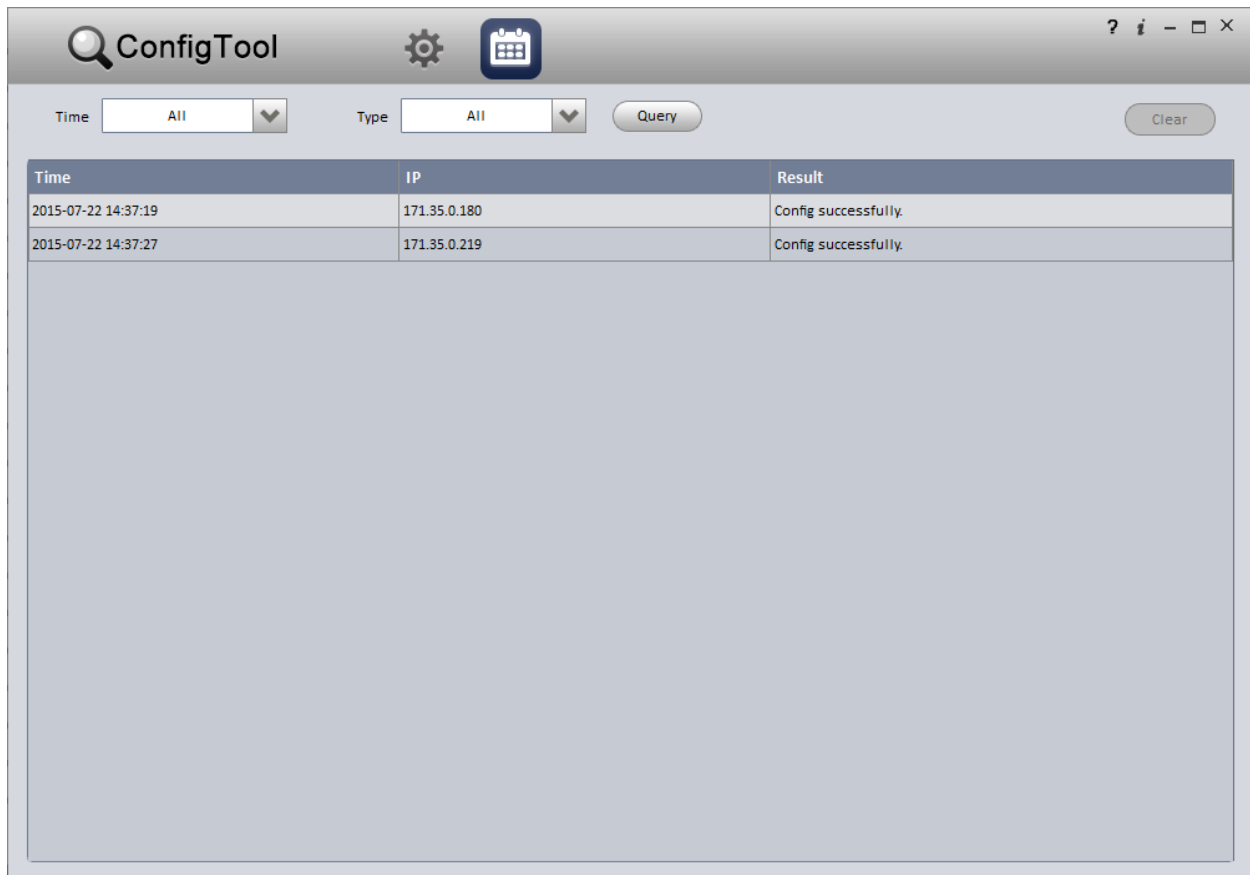


Figure 4- 20

By default, system shows all logs.

Step 2. Search and clear log.

- In dropdown list, select time and type. Click search, to search all matched log info.
- Click clear to clear all log info.